

# FireStore™

## FSHDD-1

DIGITAL VIDEO HARD DISK DRIVE

### Table of Contents

Chapter 1	Introduction	P.2
Chapter 2	Package Content	P.3
Chapter 3	Recorder Operation	P.3
Chapter 4	Unplug Procedure	P.4
Chapter 5	Technical Information	P.7



## **CHAPTER 1**

### **Introduction**

The FireStore FSHDD-1 is a slim, compact IDE to 1394 Firewire external Hard Drive enclosure designed for the FireStore DTE product line. The case is made of aluminum and features a shock and vibration resistant mating system. With FSHDD-1 and a DTE-compatible product, you can record your video footage directly to disk in one of many NLE file formats.

### **Obtaining Additional FSHDD-1 Drives:**

Additional recording media can be purchased from your authorized FOCUS Enhancements dealer, or direct from The FOCUS Store:

<http://www.focusinfo.com/order-desk/>

FOCUS Enhancements Product Support :

E-mail: [support@focusinfo.com](mailto:support@focusinfo.com)

Telephone: 408-370-9963. 8 am-5 pm, Pacific time.

Fax: 408-866-4859.

Mail : Focus Enhancements, 1370 Dell Ave., Campbell, CA 95008

### **1.2 System Requirement**

- a. Hardware: DTE- compatible recording product;  
PC or MAC with 1394 interface
- b. Compatible OS types:  
Windows 98SE, Windows ME  
Windows 2000, Windows XP  
Mac OS 8.6 and later

### **1.4 Product Dimension:**

13.7cm x 8.5cm x 1.5cm  
5.39" x 3.35" x 0.59"  
0.6 lbs 0.27 Kg



## CHAPTER 2

### Package Content

1. FSHDD-1 Digital Video Hard Disk Drive
2. 1394 Cable
3. Instruction manual
4. Drive label set

## CHAPTER 3

### Recorder operation

3.1. The FSHDD-1 drive is designed to operate interchangeably among many brands and versions of DTE recording equipment. Please reference the individual owner manual for information regarding installing, formatting, and operation

#### Desktop operation

3.2 The following is instruction for desktop operation. Please consult you OS's instructions for specific information on how to mount, operate, or dismount external storage volumes.

#### 3.3 Windows

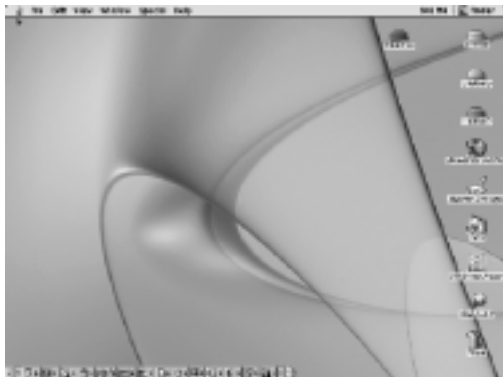
No driver is required for Win 98SE \ Win ME \ Win2000 \ Win XP

- Turn on your PC and start "Windows"
- Connect the FSHDD-1 to your computer's 1394 port
- Connect the power adapter if required and turn it on
- Click on "My Computer" to check your external Hard Drive



### 3.4 MAC OS

- Turn on your Computer
- Connect the FSHDD-1 to your computer's 1394 Firewire port
- Connect the adapter if required and turn it on
- For Mac OS 9.1 or later no driver is required. Your FSHDD-1 will show up on your desktop or you will be prompted to initialize the HDD first, if that is a factory new drive or the format is not recognized. Perform any format on your DTE compatible product. Consult the FireStore product manual for more information.



## CHAPTER 4

### Unplug Procedure

#### 4.1 Windows 98SE

- Use the device manager to stop the device
- Turn off the power of your FSHDD-1
- Unplug the Firewire cable

#### 4.2 Windows ME / 2000/ XP

- Single click (right mouse button) on the taskbar icon
- Click on popup message



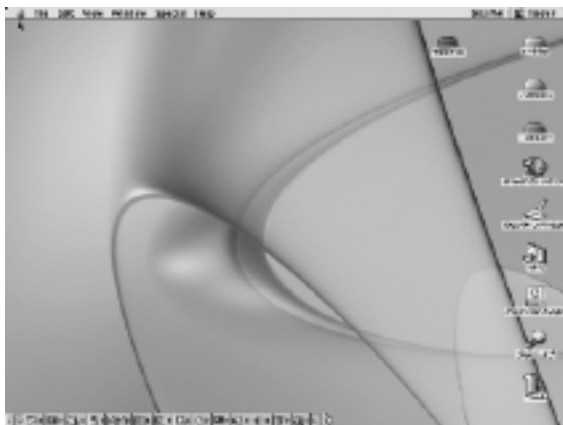
## External Hardware Icon

- Click "OK" and remove the device



## 4.3 Mac OS

Pull the icon into the trash bin and remove the device



## ATTENTION!!

To assure not data will be lost, always follow the "unplug procedure". If not, data could be lost and the following message will show up:

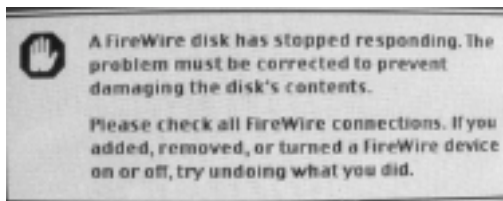
For Windows ME



For Windows 2000



For Mac OS



## CHAPTER 5

### Technical Information

FSHDD-1 1394 Firewire (Initio 1430)

- ✓ Over Voltage Protection (OVP) with a limit of 10% before shut down (max 30V). Protection for device or Hard Drive damage, caused by unstable voltage or faulty and broken power adapter.
- ✓ Low Voltage Detection (LVD) indicating insufficient power supply. Possible case, USB 2.0 bus powered. Solution, add power adapter.



- ✓ Connector Polarity Protection to prevent any damage to the device or Hard Drive caused by using a wrong adapter (correct: internal +, external -).
- ✓ Bus Power supported, although it still depends on the complete environment (type and size of Hard Drive, Computer, Host Card and length of cable) if the Hard Drive can be used with bus power only or not.

**Note:** To assure bus power works with your system, please test it first. Some points which might help, use a short cable (40-50cm), smaller capacity HDD and try different Computers or Host Cards

### Adapter Specification

AC Input 100-240V

Plug Head Size 3.5mm

DC Output +5.0V 1.6A

**Performance Test**

Test Computer

Motherboard	BIOSTAR M7VKB1.0
CPU Processor	AMD Athlon™
CPU Speed	1600MHz
System RAM (MB)	128MB
1394 Host Controller	VIA OHCI Compliant IEEE 1394 Host Controller
Operating System	Microsoft Windows 2000

Hard Drive

Model	RPM	Capacity	Remark
IBM-DJSA-210	4200RPM	10.06GB	

Test Data

Model	Read	Write	File Copy (1G)	Unit	Interface
AL-FR02-1430	16246	12548	12847	Kbytes	1394

